

**THE GARDENS**  
Sample Floor Plans

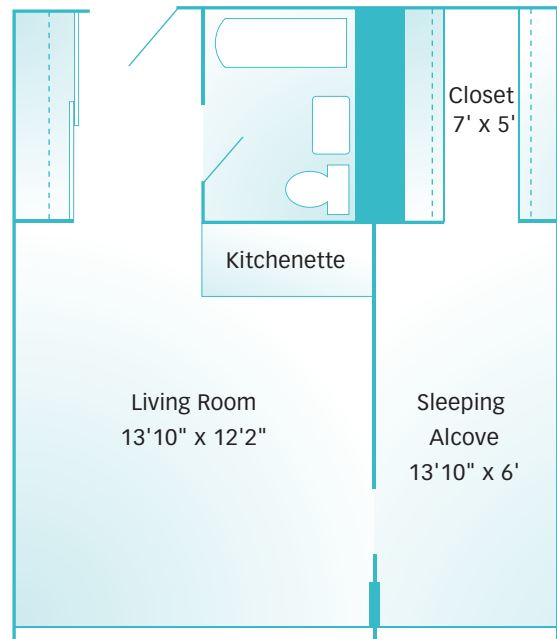
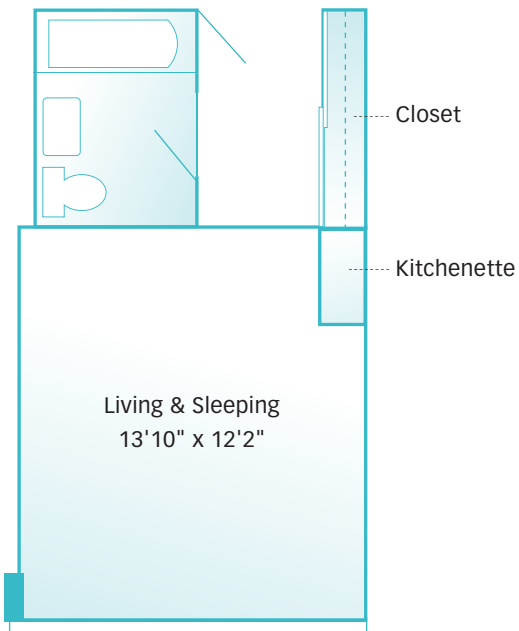


**Intimate and casual**

- Water and mountain views
- Kitchenettes with refrigerator and microwave
- Step-in showers with grab bars
- Individually controlled hot water heat
- Emergency call system
- Internet accessible
- Storage locker included

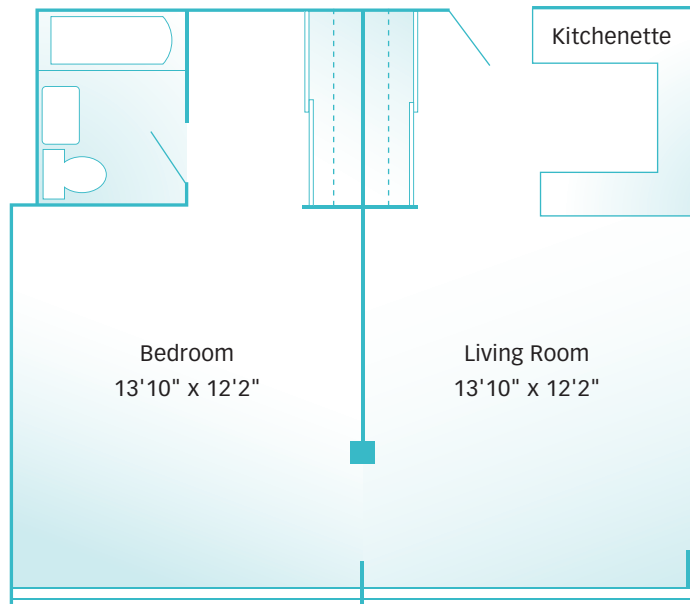
**STUDIO** 252 sq. ft.

**ALCOVE** 382 sq. ft.



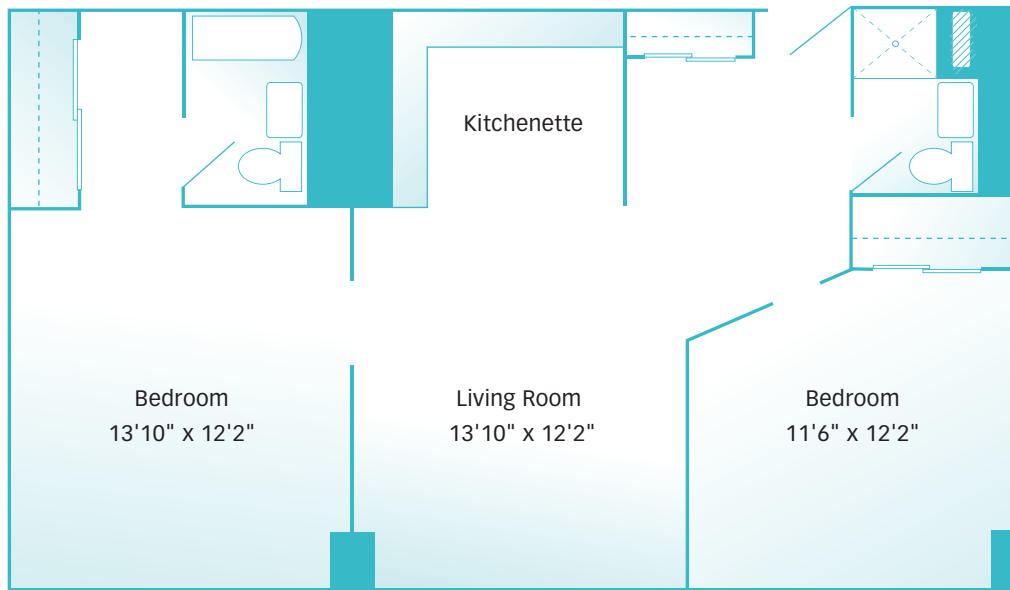
**ONE BEDROOM** 504 sq. ft.

---



**TWO BEDROOM** 756 sq. ft.

---



815 South 216th Street  
Des Moines, WA 98198  
**206.824.5000**

**866-WESLEY-0**  
(866-937-5390) toll-free  
[www.wesleyhomes.org](http://www.wesleyhomes.org)

